

**Preliminary Observations on the
Ecology of the Ouachita Streambed
Salamander *Eurycea subfluvicola***



**Kelly J. Irwin
AR Game & Fish Commission**

Eurycea multiplicata

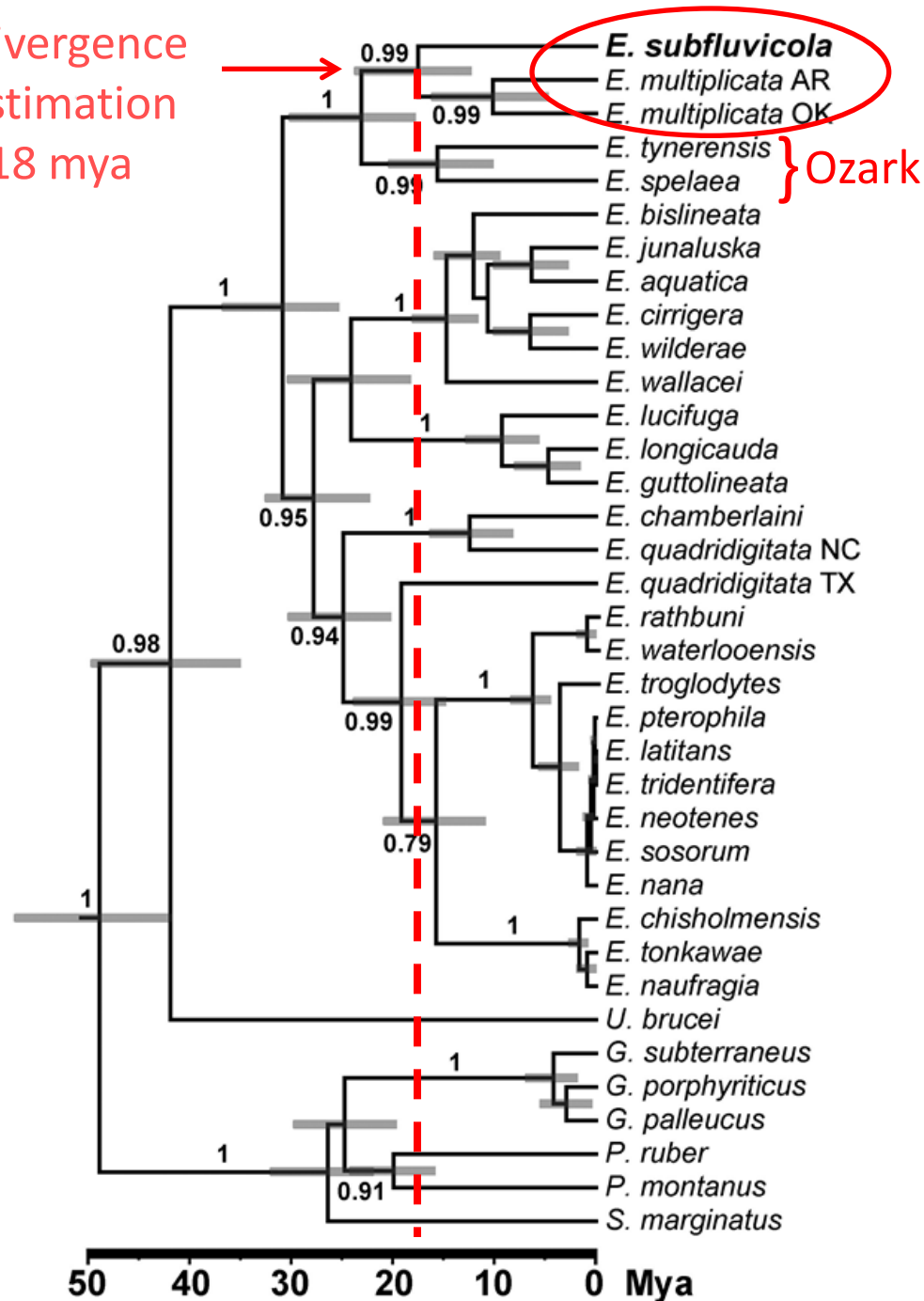




Eurycea subfluvicola



Divergence
estimation
~18 mya



Eurycea subfluvicola



Eurycea multiplicata



A photograph showing two salamanders and several eggs. The salamander on the left is larger and has a dark, mottled pattern with reddish-orange gills. The salamander on the right is smaller and has a yellowish-brown mottled pattern with reddish-orange gills. They are surrounded by light-colored, irregularly shaped rocks and several white, oval-shaped eggs.

E. multiplicata

E. subfluvicola

Ouachita Mountains



Image Landsat / Copernicus

Google Earth
Earth

lat 34.780795° lon -93.593313° elev 297 m eye alt 19

Trap Mountains



Google Earth

Imagery Date: 1/29/2016 lat 34.384577° lon -93.063083° elev 286 m eye alt 4

Site 2



Site 2



Dry bed







In situ ~2030 hrs May 2013



A close-up photograph showing a large number of small, brown, segmented millipede larvae (Lirceus sp.) scattered across a light-colored, textured surface. The larvae are densely packed in some areas and more sparse in others. The surface appears to be a piece of paper or fabric with some orange-brown staining. The text "Lirceus sp." is overlaid in yellow in the lower-left quadrant.

Lirceus sp.











5 mm





Acknowledgements

R. Bonett, R. Boyes, D. Filipek, S. Filipek,
T. Gendusa, S. O'Neal, J. Phillips, K.
Roberts, M. Steffen, R. Tovar, and R.
Tumlison

